

The Lohse Apartments

New Affordable Housing

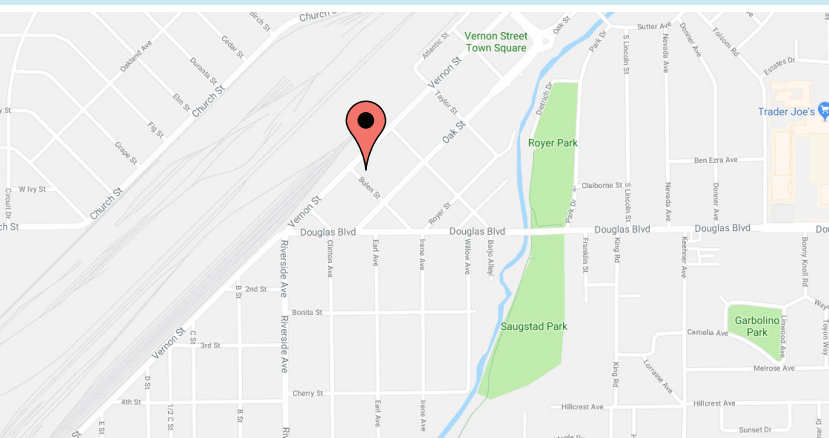


The Lohse Apartments

623 Vernon Street
Roseville, CA 95678

(916) 472-2962

TTY: 800.877.8973 or 711



mercyHOUSING

Reasonable accommodations will be made
available for persons who make a request.



**Applications are available
to download on**

www.mercyhousing.org/CA-thelohseapartments

**Applications must be mailed to
8250 Calvine Rd C302
Sacramento, CA 95828**

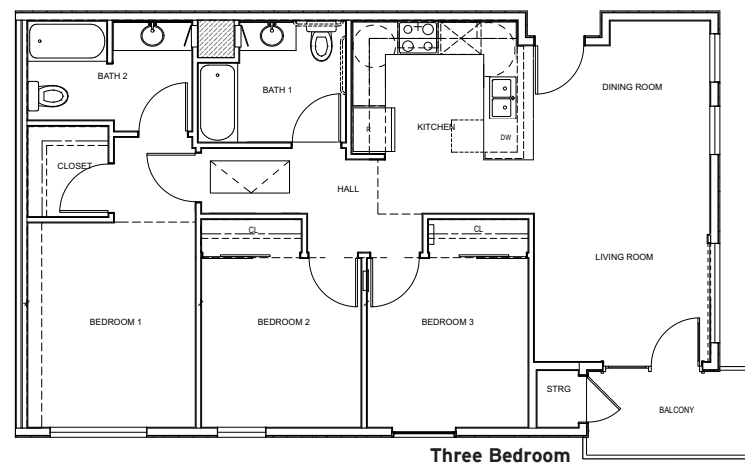
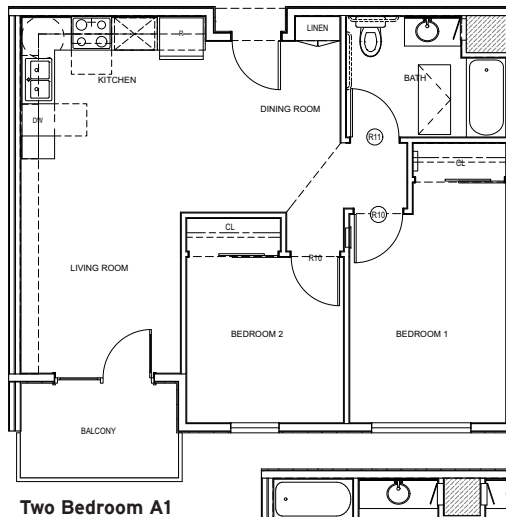
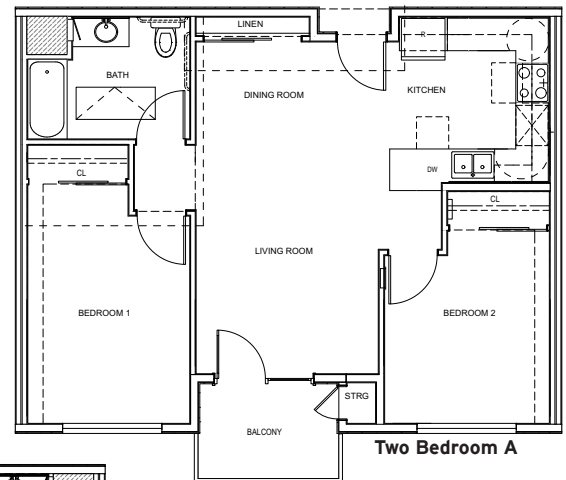
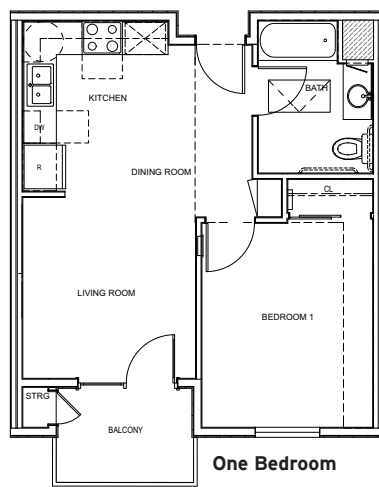
**Applications will be accepted
March 22, 2018 to April 20, 2018**

**Applications must be postmarked
by April 20, 2018
to be included in the lottery drawing**

- Lottery drawing will be conducted on May 9, 2018, at 10:00 a.m. Location of lottery drawing will be announced by April 27th. Visit www.mercyhousing.org/CA-thelohseaprtments for information. Lottery drawing is open to the public. Applicants are not required to attend.

FEATURES AND AMENITIES

- Mixed-use, four-story, 58-apartment community
- 12 one-bedrooms
- 26 two-bedrooms
- 19 three-bedrooms
- Outdoor play facilities in a central courtyard
- Common areas include community room, computer area, lounge area, and laundry room
- Full kitchens that include ranges, range hoods, refrigerators, and dishwashers
- 60 underground and four surface parking spaces
- Commercial space on the ground floor
- Non smoking community



INCOME QUALIFICATIONS & RENTS*

Unit Size	Avg Sq Footage	Household Size	No. of Units	Approx. Rent	Maximum Annual Income
1 Bedroom	557	1 to 3 Persons	12	\$417 to \$835	\$15,600 - \$40,080
2 Bedroom	837	2 to 5 Persons	26	\$501 to \$1,022	\$17,820 - \$48,120
3 Bedroom	1,095	3 to 7 Persons	19	\$579 to \$1,158	\$20,040 - \$55,260

* Rents and Incomes are subject to change per regulatory agency.
Other restrictions apply. See Resident Selection Criteria for details.